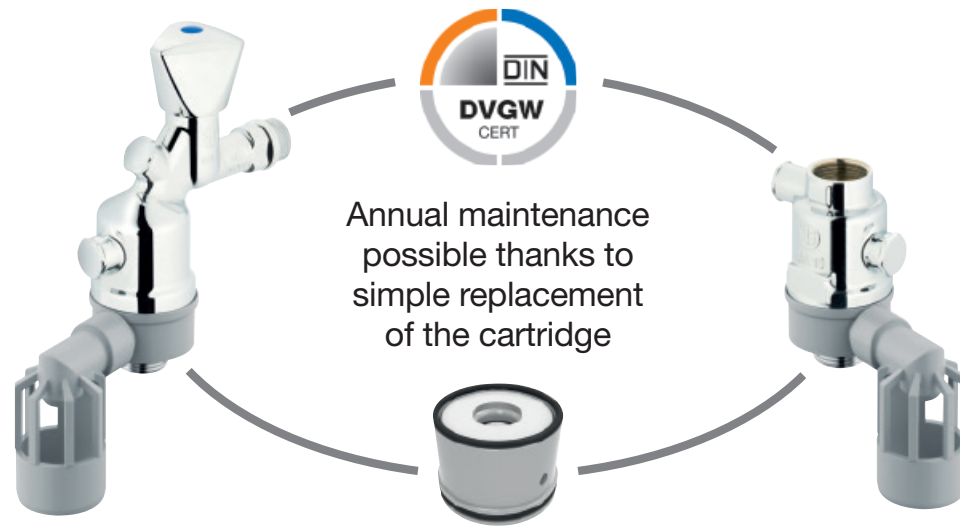


Have you already heard of our...

System Separator BA4:

Safety for drinking water
in accordance with DIN EN 1717 and DN 1988-100



Art. no.: 0082601550001

Art. no.: 0082501500001

Art. no.: 0082511550001



water in motion

Installation instructions
JS Water Stop
Hose Burst Safety Device
for washing machines and dishwashers



General installation and user instructions

These instructions apply to water-bearing products of Schlösser Armaturen GmbH & Co. KG. These products are to be used solely as part of a drinking water installation!

Important information

- Schlösser Armaturen GmbH & Co. KG products may only be installed by professional sanitary technicians.
- Avoid exposure to frost or direct sunlight when transporting and storing the products. The product must be stored at a temperature between 3°C and 25°C.

Installation instructions

- The applicable norms must be observed with regards to the installation, cleansing and tightness testing of our products. The requirements of DIN EN 806, DIN EN 1717 and DIN 1988 shall apply for the water installation.
- The installation instructions enclosed with the product must be adhered to – the product must be examined prior to installation for transport damages and completeness. Any complaints concerning these defects that are made at a later date will be rejected.
- Wear gloves to prevent injuries.
- Only use suitable and undamaged tools.
- It is essential that you pay attention to cleanliness and hygiene during installation. After unpacking the product, you should immediately begin installing it onto the water installation.
- The components must remain hygienically flawless on the construction site!
- The counter thread, our products are connected to, must be true to gauge. Pipe threads must meet the ISO 228 and EN 10226.
- The drinking water installation must be secured with an approved leakage protection system.
- Pressure differences between the cold and warm water connections may not exceed 1.5 bar.
- The installation must be carried out in such a manner that ensures the prevention of high pressure shocks.
- If the period between the tightness test / rinsing of a new drinking water installation and the actual commissioning should be more than 7 days, the supply lines must be emptied.

If the installation instructions are not adhered to, or if changes are carried out to the scope of the product, it will lead to the loss of the warranty!

Use original spare parts and accessory parts only.

Instructions for use

- The warm water flow temperature should not be lower than 65° for hygienic reasons.
- If a chlorination should be carried out, do not exceed the prescribed dosage.
- After a stagnation period of 4 hours or more, the German Federal Environmental Agency recommends not using the affected water to prepare meals and drinks. This recommendation can be fulfilled by not using the first litre as drinking water.
- Backflow preventers must be checked and serviced regularly in accordance with DIN EN 1717.
- The installation of a decalcifying system is strongly recommended for levels of water hardness from 14°dH.

Operating conditions

- Max. warm water flow temperature: 90° C
- Recommended hot water flow temperature: max. 65° C
- Max. cold water flow temperature: 25° C
- Min. operating pressure: 1 bar
- Recommended operating pressure: 2 - 4 bar
- Install a pressure-reducing device for pressures from 5 bar

Subject to technical changes!

Care instructions

These instructions apply to all products with a surface coating.

We want you to benefit from your fittings for a long time. It is therefore important to adhere to the following care instructions, as surface and material damages that result from improper treatment are not covered by the warranty.

Only use cleaning agents that are explicitly specified for this area of application.

Do not use any abrasive sponges or scouring agents for cleaning. We also advise against using solvents or acidic cleaning products, lime scale removers, household vinegar and cleaning agents with acetic acid. They attack the surface – your fitting will become dull and scratched.

Since the formulas of commercial cleaning agents are frequently changed, we cannot guarantee that they will ensure the gentle cleaning of our fitting.

Our recommendation: Clean the fitting using only a little soap and a damp cloth. Then simply rinse off and rub it dry. You can prevent lime stains if you dry off the fitting after every use.

Please note

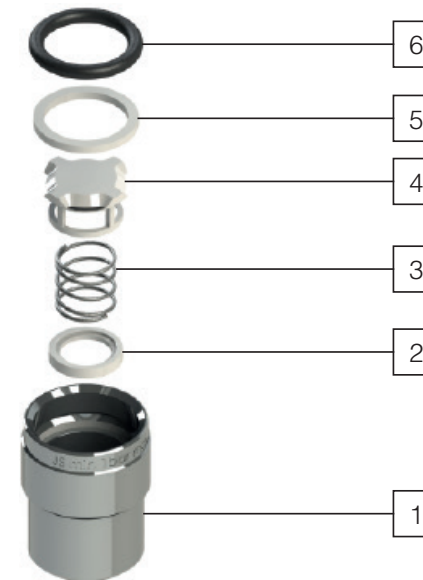
The water supply tap must always be opened fully when using the machine, the safeguard could otherwise fail if too little water flows through.

The hose burst safety device closes at a water flow rate of 18+ litres/minute, at a minimum flow pressure of 2 bar. The hose burst safety device does not react to low leakages of the hose or the hose connection. Close the water supply tap, therefore, when you are not using the machine. Slow outflowing water can also cause significant damage.

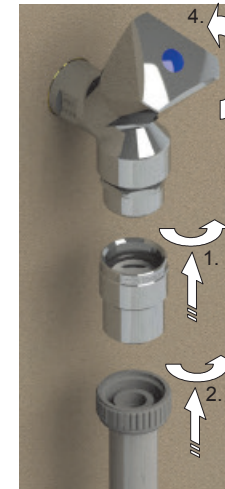
- Keep the user manual.
- Check the connection hoses occasionally.
- Only operate water-bearing devices under supervision.

Exploded drawing

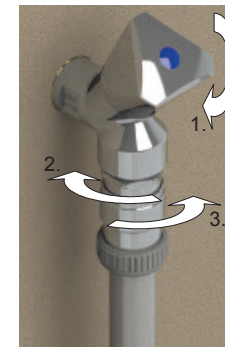
- Item 1 Housing
- Item 2 Spring seat
- Item 3 Pressure spring
- Item 4 Valve cone
- Item 5 Washer disc
- Item 6 O-ring



The hose burst safety device for washing machines and dishwashers stops the water throughput with a washing machine or dishwasher water supply hose that has fully burst or slipped off completely. Only use it in connection with commercial household washing machines and dishwashers.



3.



Installation steps

1. Screw the hose burst safety device onto the standardised washing machine or dishwasher supply tap (hand tighten only – use no tool).
2. Screw the water supply hose onto the hose burst safety device.
3. Put the washing machine or dishwasher into operation. This vents the water supply hose.
4. Slowly and fully open the water supply hose.

In the event of damages, proceed as described in points 1 to 3.

Functional disturbance troubleshooting during installation

If the water throughput remains closed after installing the hose burst safety device, the water supply tap was opened too quickly.

Establish readiness for operation:

1. Close the water supply tap.
2. Open the hose burst safety device approx. 1/2 turn (for venting).
3. Tighten the hose burst safety device again.

Further functional disturbances

If the valve cone is stuck (e.g. through foreign bodies etc.) and therefore does not lift out of the seat when venting, the water supply tap must be closed. Afterwards, screw off the water supply hose and lift the valve cone with a pencil or similar.

Important!

A pressure inspection must be carried out after the fitting has been installed!

Depending on the water hardness or impurity of the water, for example sand particles in the water supply, the hose burst safety device should be inspected quarterly for proper function.

